

**USB 3.1 Gen 1 5G 4-Speed  
Multi-Gigabit Ethernet Adapter**

**User Manual**

**Ver. 1.00**

**All brand names and trademarks are properties of their  
respective owners.**

# Contents:

<b>Chapter 1: Introduction .....</b>	<b>3</b>
1.1 Product Introduction .....	3
1.2 Features.....	3
1.3 System Requirements .....	4
1.4 Package Contents.....	4
<b>Chapter 2: Getting Started .....</b>	<b>4</b>
2.1 Hardware Installation .....	4
2.2 Driver Installation.....	5
2.2.1 Installation for Windows.....	5
2.2.2 Installation for Linux .....	6
2.3 Hardware Verify.....	7
2.3.1 Verifying for Windows.....	7
2.3.2 Verifying for Linux .....	8

# Chapter 1: Introduction

## ***1.1 Product Introduction***

This USB 3.1 Gen 1 5G 4-Speed Multi-Gigabit Ethernet Adapter lets your MacBook or laptop connect directly to the internet via Ethernet cable, this compact and portable adapter is ideal as a desktop replacement network adapter or laptop accessory.

## ***1.2 Features***

- Compliant with Universal Serial Bus 3.1 Gen 1 Specification, Revision 1.0
- Supports 100/1000/2500/5000 Mbps Ethernet
- Compatible with NBASE-T Alliance PHY, IEEE 802.3bz
- Supports advanced link down power saving when Ethernet cable is unplugged
- LEDs indicate the status of Power status and Ethernet connection
- Up to 16KB jumbo frames

## ***1.3 System Requirements***

- Windows® 7/8/8.1/10 (32/64 bit)
- Linux 3. x or later; Linux 4. x or later

## ***1.4 Package Contents***

- 1 x USB 3.1 Gen 1 5G 4-Speed Multi-Gigabit Ethernet Adapter
- 1 x Driver CD
- 1 x USB 3.1 Gen 1 cable (model dependent)
- 1 x User Manual

# Chapter 2: Getting Started

## ***2.1 Hardware Installation***

1. Plug the USB 3.1 Gen 1 5G 4-Speed Multi-Gigabit Ethernet Adapter directly into an available USB port on your computer.
2. Connect one end of your network cable into the RJ45 port of USB 3.1 Gen 1 5G 4-Speed Multi-Gigabit Ethernet Adapter.
3. Connect the other end of the network cable into an available Ethernet port on your router, switch, or any other networking

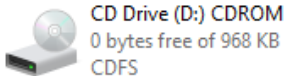
device.

## 2.2 Driver Installation

The following section shows you how to install the USB 3.1 Gen 1 5G 4-Speed Multi-Gigabit Ethernet Adapter driver on different operating systems.

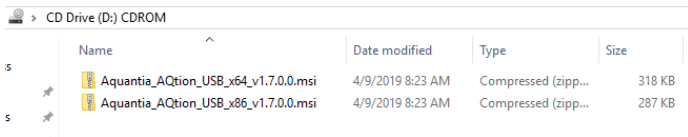
### 2.2.1 Installation for Windows

1. Plug the USB 3.1 Gen 1 5G 4-Speed Multi-Gigabit Ethernet Adapter directly into an available USB port on your computer. The CD-ROM will start automatically. The following screen will show up and please click “**CD-ROM**”.



**Note:** If the install program doesn't run automatically, please insert the CD and follow the path “Driver\AQC USB Network\Windows”, select the driver that matches the system.

2. Choose a driver that matches the system.



Name	Date modified	Type	Size
Aquantia_AQtion_USB_x64_v1.7.0.0.msi	4/9/2019 8:23 AM	Compressed (zipp...	318 KB
Aquantia_AQtion_USB_x86_v1.7.0.0.msi	4/9/2019 8:23 AM	Compressed (zipp...	287 KB

3. Follow the instructions on screen to install the driver.

## 2.2.2 Installation for Linux

1. Insert the provided CD into your CD-ROM drive.
2. Extract the compressed driver source file to a certain directory by the following command: (Please copy the driver file “fiji.tar.gz” from the CD folder “.\ Driver\AQC USB Network\linux” to a certain folder on hard drive)

```
# tar xf fiji.tar.gz
```

3. Now, the driver source files should be extracted under the current directory. Executing the following command to compile the driver:

# make

4. If the compilation is well, the `fiji.tar.gz` will be created under the current directory.
5. If you want to use `modprobe` command to mount the driver, executing the following command to install the driver into your kernel:

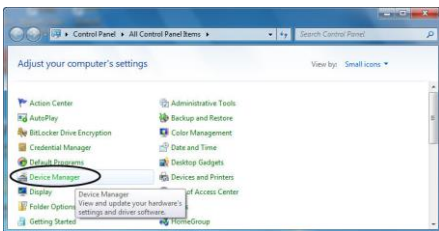
# make install

## 2.3 Hardware Verify

### 2.3.1 Verifying for Windows

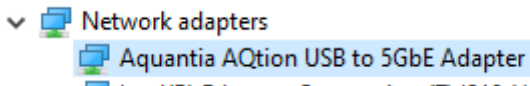
1. Click on the “**Device Manager**” tab in the Windows Control Panel.

**Start > Control Panel > Device Manager**



2. Entry “**Network adapters**” item, and you can read “**Aquantia**”

**AQtion USB to 5GbE Adapter”** in the Device Manager.



## 2.3.2 Verifying for Linux

1. You can check whether the driver is loading by using following commands:

```
# ifconfig -a
```

If there is a device name, etX, shown on the monitor, the linux driver is load. Then, you can use the following command to activate the etX.

```
# ethtool -i enX
```